

VICTORIA HOUSE

FLOOR PLANS

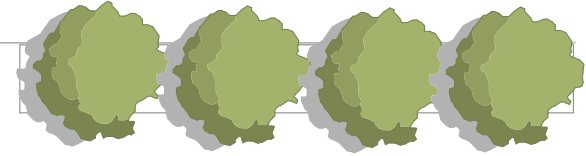
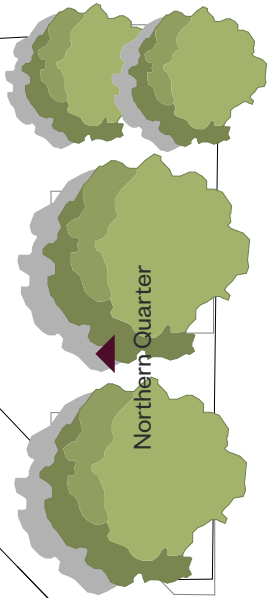
Ground

GREAT ANCOATS STREET

VICTORIA HOUSE

Ancoats

New Islington



Hotel Leonardo

Public Square

Manchester City Centre

MANCHESTER STREET

NORTH

ORTH STREET

Please note, the floorplans displayed are correct at the time of publication but the actual layout and arrangement of furniture are subject to changes which will not materially affect the overall size or amenity offered by the room.

Floor 1

VICTORIA HOUSE

▲
Ancoats

▲
New Islington



▲
Northern Quarter

▲
Hotel Leonardo

▲
Manchester City Centre

▼
Public Square

▲
NORTH

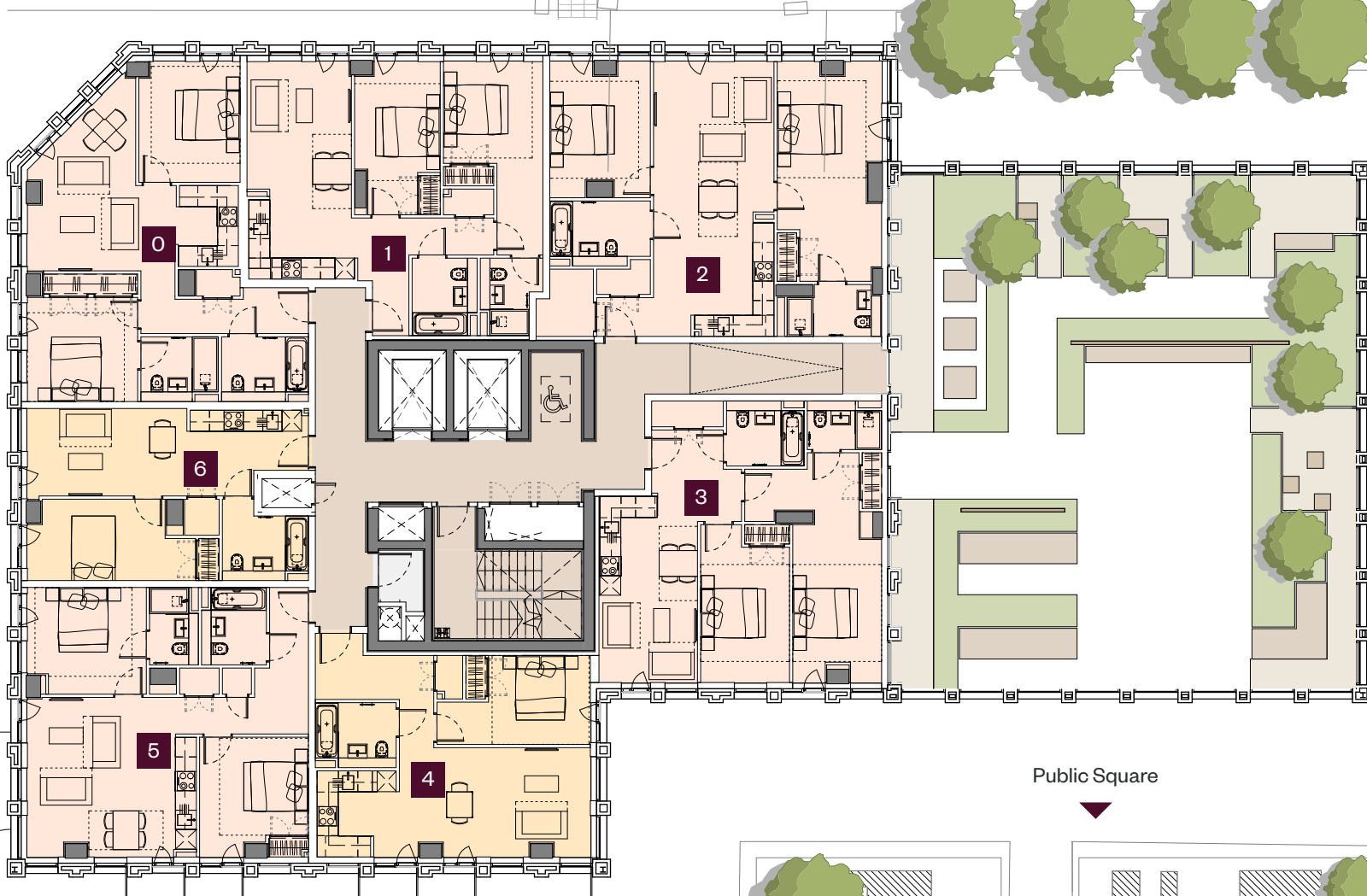
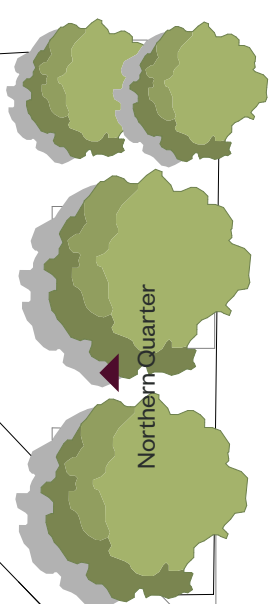
Please note, the floorplans displayed are correct at the time of publication but the actual layout and arrangement of furniture are subject to changes which will not materially affect the overall size or amenity offered by the room.

Floor 2

VICTORIA HOUSE

▲
Ancoats

▲
New Islington



Hotel Leonardo

Public Square

Manchester City Centre

NORTH

Please note, the floor plans displayed are correct at the time of publication but the actual layout and arrangement of furniture are subject to changes which will not materially affect the overall size or amenity offered by the room.

Floor 3-8

VICTORIA HOUSE

▲
Ancoats

▲
New Islington

Northern Quarter
▲

Hotel Leonardo
▲

Manchester City Centre
▲



Public Square
▲

NORTH

Please note, the floorplans displayed are correct at the time of publication but the actual layout and arrangement of furniture are subject to changes which will not materially affect the overall size or amenity offered by the room.

Floor 9-18

VICTORIA HOUSE

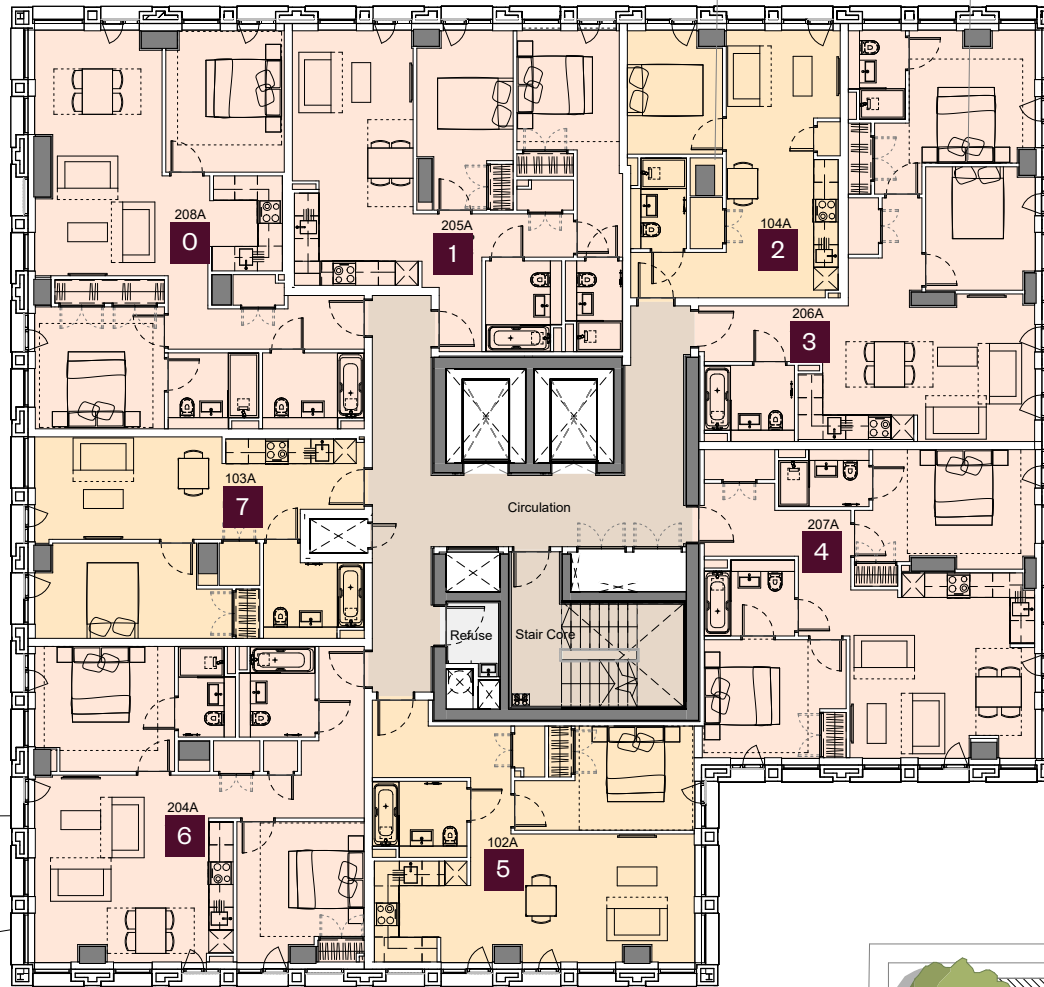
▲
Ancoats

▲
New Islington

▲
Northern Quarter

▲
Hotel Leonardo

▲
Manchester City Centre



▲
Public Square

▲
NORTH

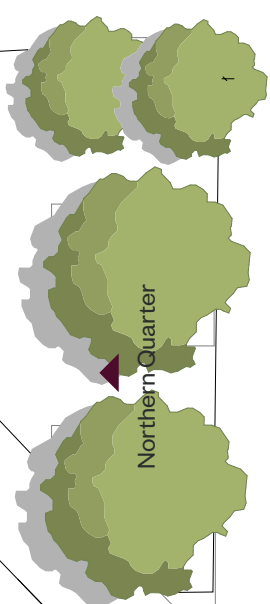
Please note, the floorplans displayed are correct at the time of publication but the actual layout and arrangement of furniture are subject to changes which will not materially affect the overall size or amenity offered by the room.

Floor 19-22

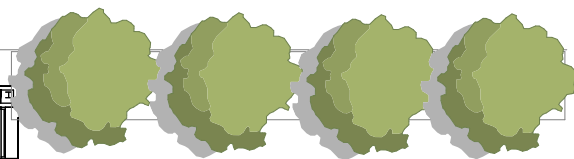
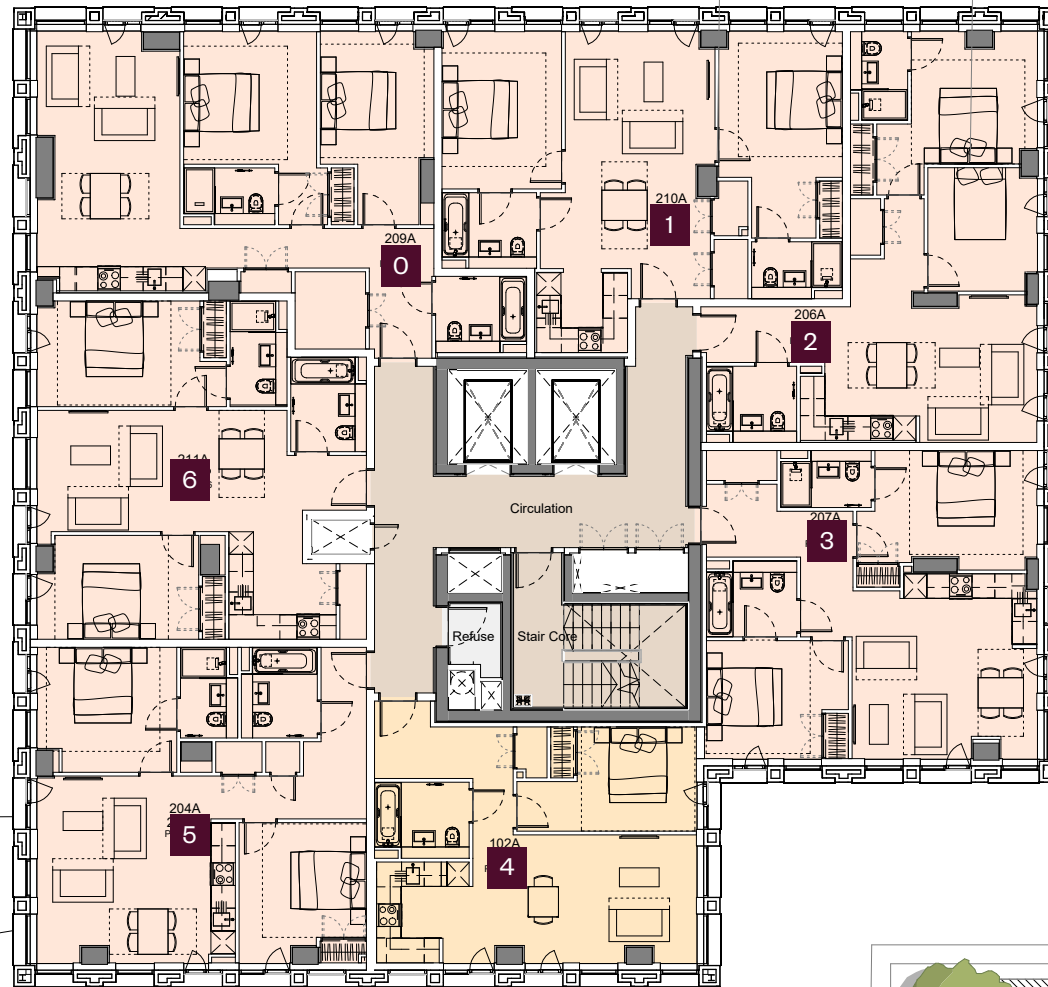
VICTORIA HOUSE

▲
Ancoats

▲
New Islington



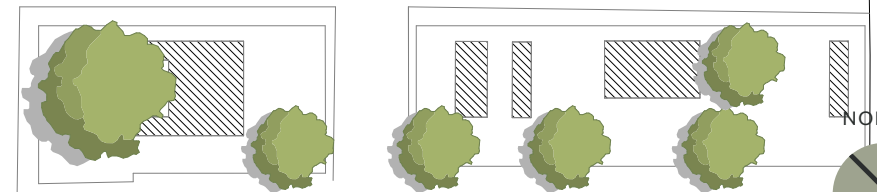
Northern Quarter



Hotel Leonardo

Public Square

Manchester City Centre



NORTH

Please note, the floorplans displayed are correct at the time of publication but the actual layout and arrangement of furniture are subject to changes which will not materially affect the overall size or amenity offered by the room.

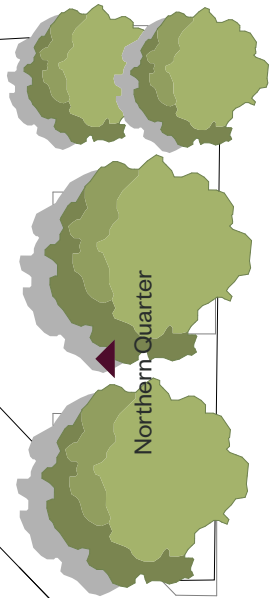
Floor 23

Lower Penthouse

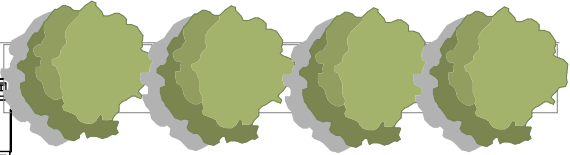
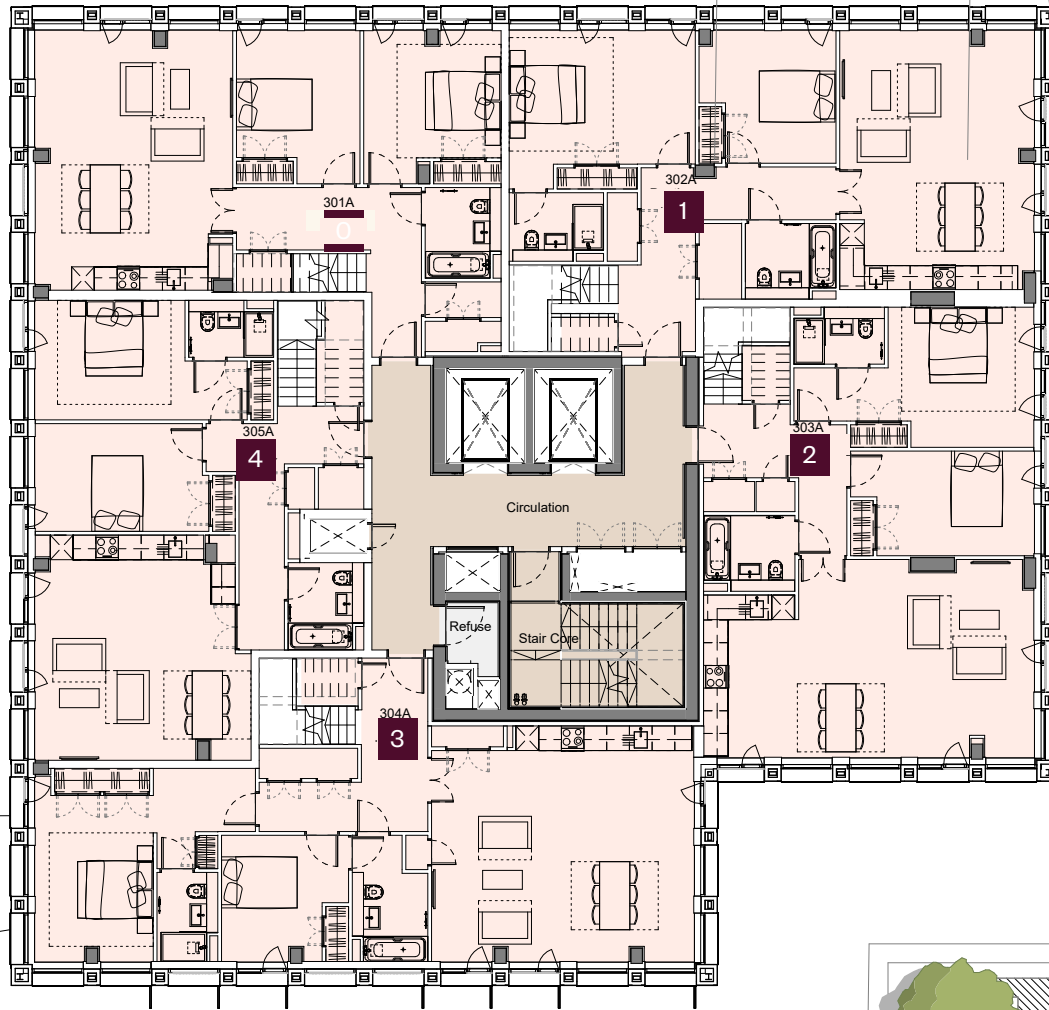
VICTORIA HOUSE

▲
Ancoats

▲
New Islington



Northern Quarter

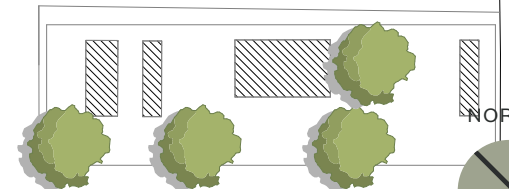
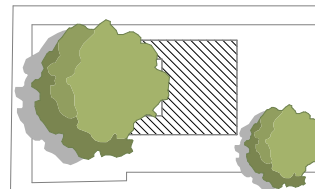
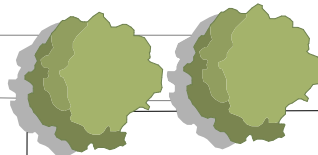


Hotel Leonardo

Public Square



Manchester City Centre



NORTH



Please note, the floorplans displayed are correct at the time of publication but the actual layout and arrangement of furniture are subject to changes which will not materially affect the overall size or amenity offered by the room.

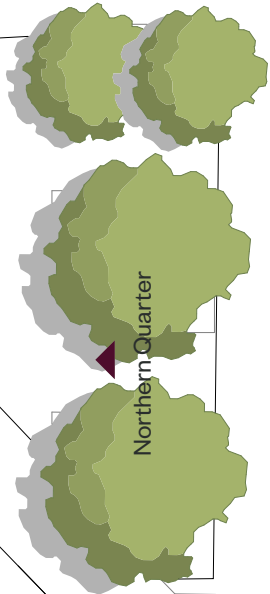
Floor 24

Upper Penthouse

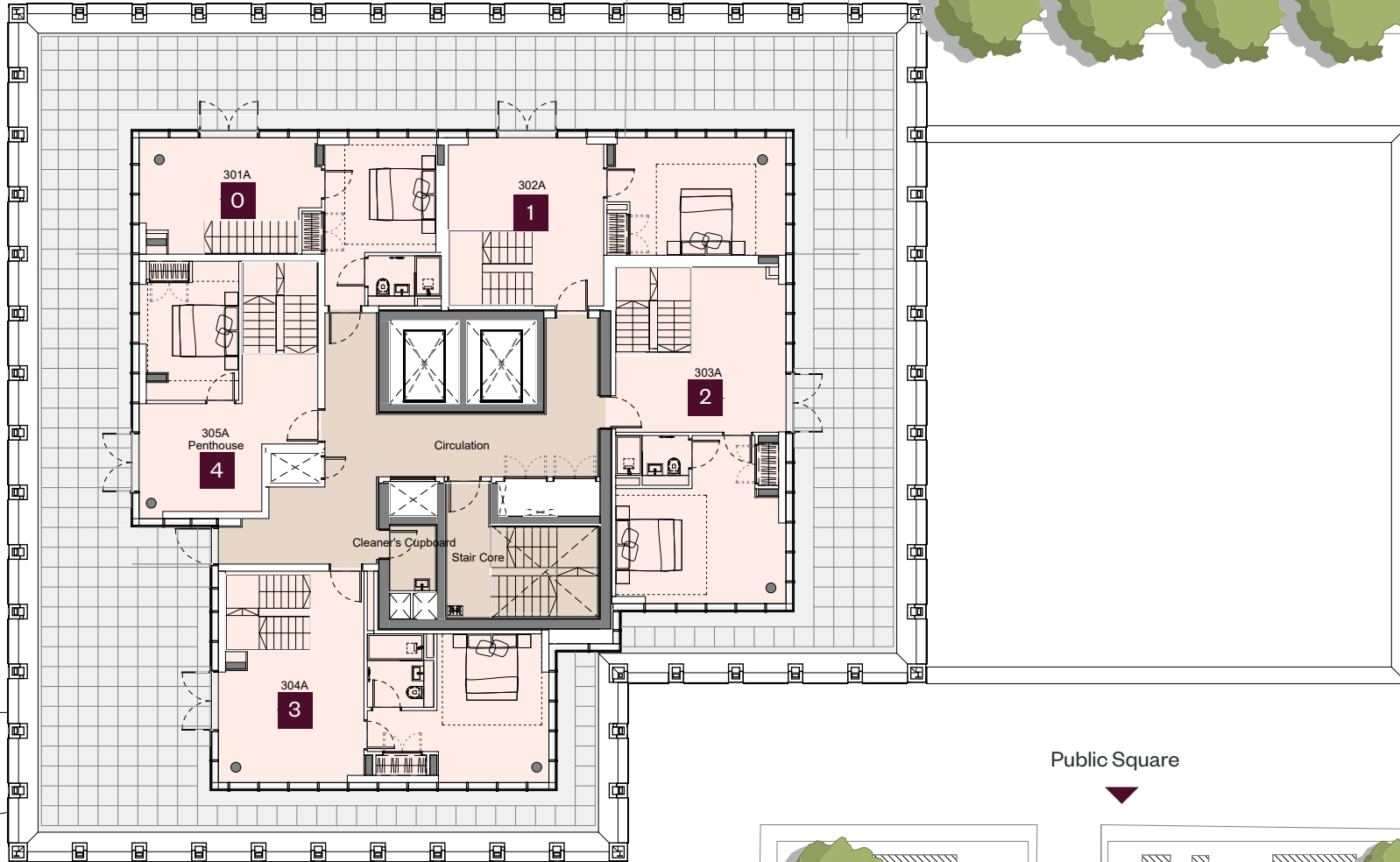
VICTORIA HOUSE

▲
Ancoats

▲
New Islington



Northern Quarter



Public Square

Hotel Leonardo

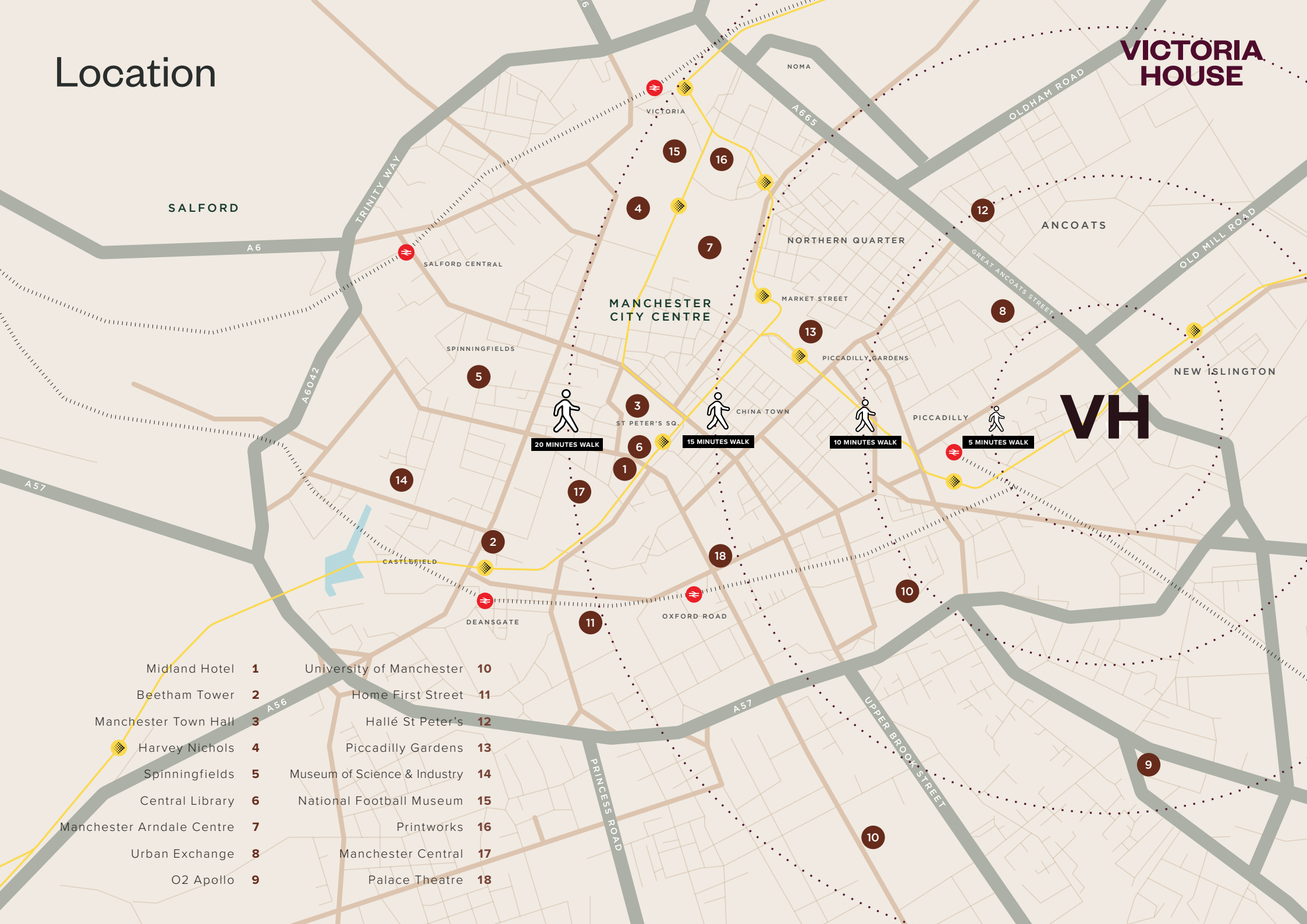
Manchester City Centre

NORTH



Please note, the floorplans displayed are correct at the time of publication but the actual layout and arrangement of furniture are subject to changes which will not materially affect the overall size or amenity offered by the room.

Location



VICTORIA HOUSE

VH

- | | | | |
|---------------------------|----------|------------------------------|-----------|
| Midland Hotel | 1 | University of Manchester | 10 |
| Beetham Tower | 2 | Home First Street | 11 |
| Manchester Town Hall | 3 | Hallé St Peter's | 12 |
| Harvey Nichols | 4 | Piccadilly Gardens | 13 |
| Spinningfields | 5 | Museum of Science & Industry | 14 |
| Central Library | 6 | National Football Museum | 15 |
| Manchester Arndale Centre | 7 | Printworks | 16 |
| Urban Exchange | 8 | Manchester Central | 17 |
| O2 Apollo | 9 | Palace Theatre | 18 |

VICTORIA HOUSE

Joint Venture Development by

 **SALBOY** forshaw.

Please note that the information that we distribute is produced with great care and believed to be correct at the time of printing to the best of our knowledge. Pictures, layouts and other details displayed are given as a general guide and may change from time to time in accordance with the final designs of the development and appropriate planning permissions. We endeavour to ensure that the details we provide are accurate and well researched at all times, however we cannot ultimately warrant the accuracy of that information and cannot be held liable for any reliance you may make of or put on it except as specifically agreed with us in any further agreement we may make with you in writing.